



BEVERS REAL ESTATE



Heart of Texas Ranches

Ranch Home Sites in Burleson County

Between Houston, Austin, & College Station - All Paved Road Frontage

New Stone Gateways on each property - 7 to choose

- **Ranching/Recreational**
- **Rolling Terrain**
- **Majestic Oaks**
- **Breathtaking Views**
- **Live Creek**
- **Improved Pastures**
- **Wooded Areas**
- **Ponds**

Contact Travis Bevers for Showing Information

(979)277-4920

www.BeversRealEstate.com

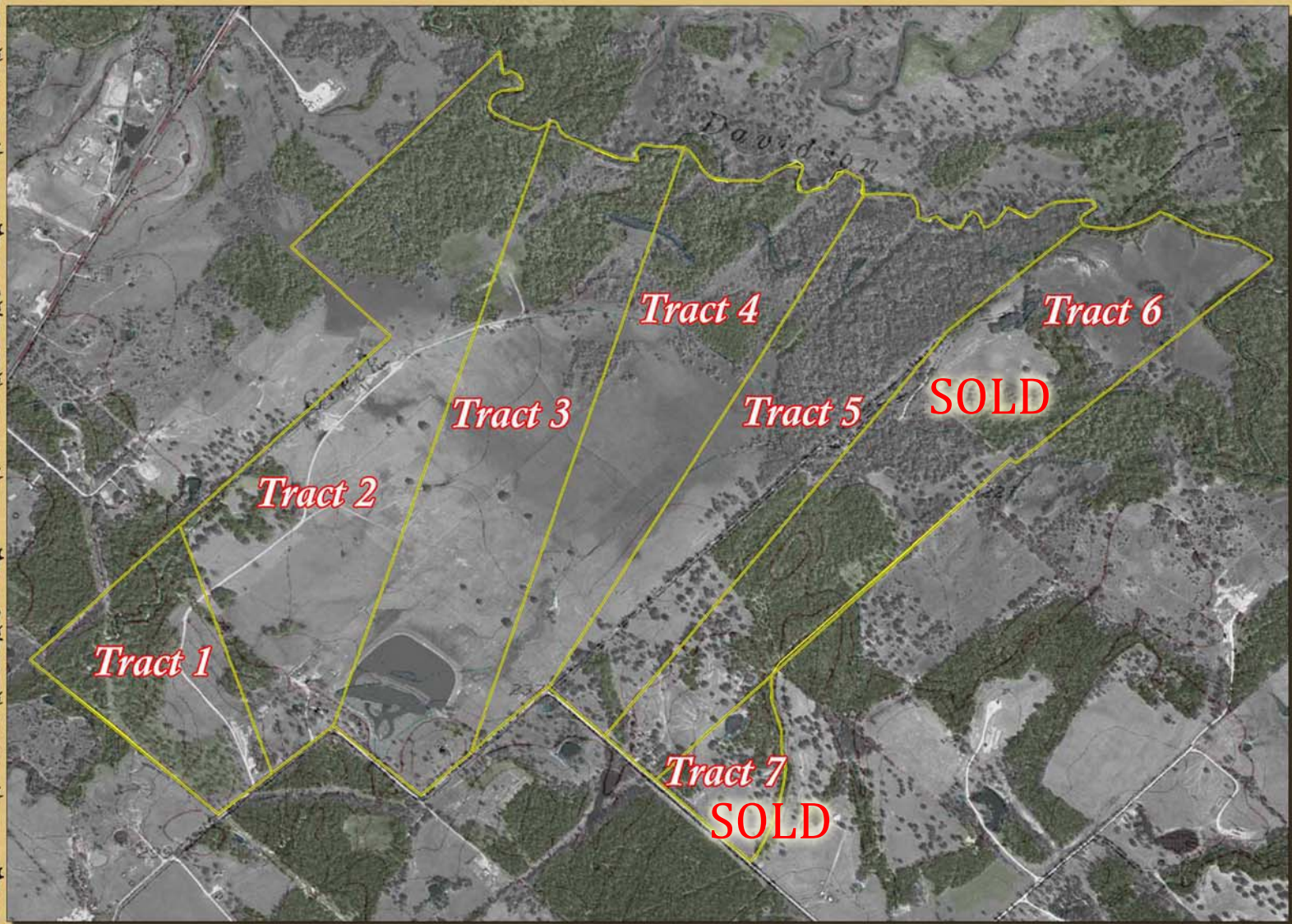
Heart of Texas Ranches



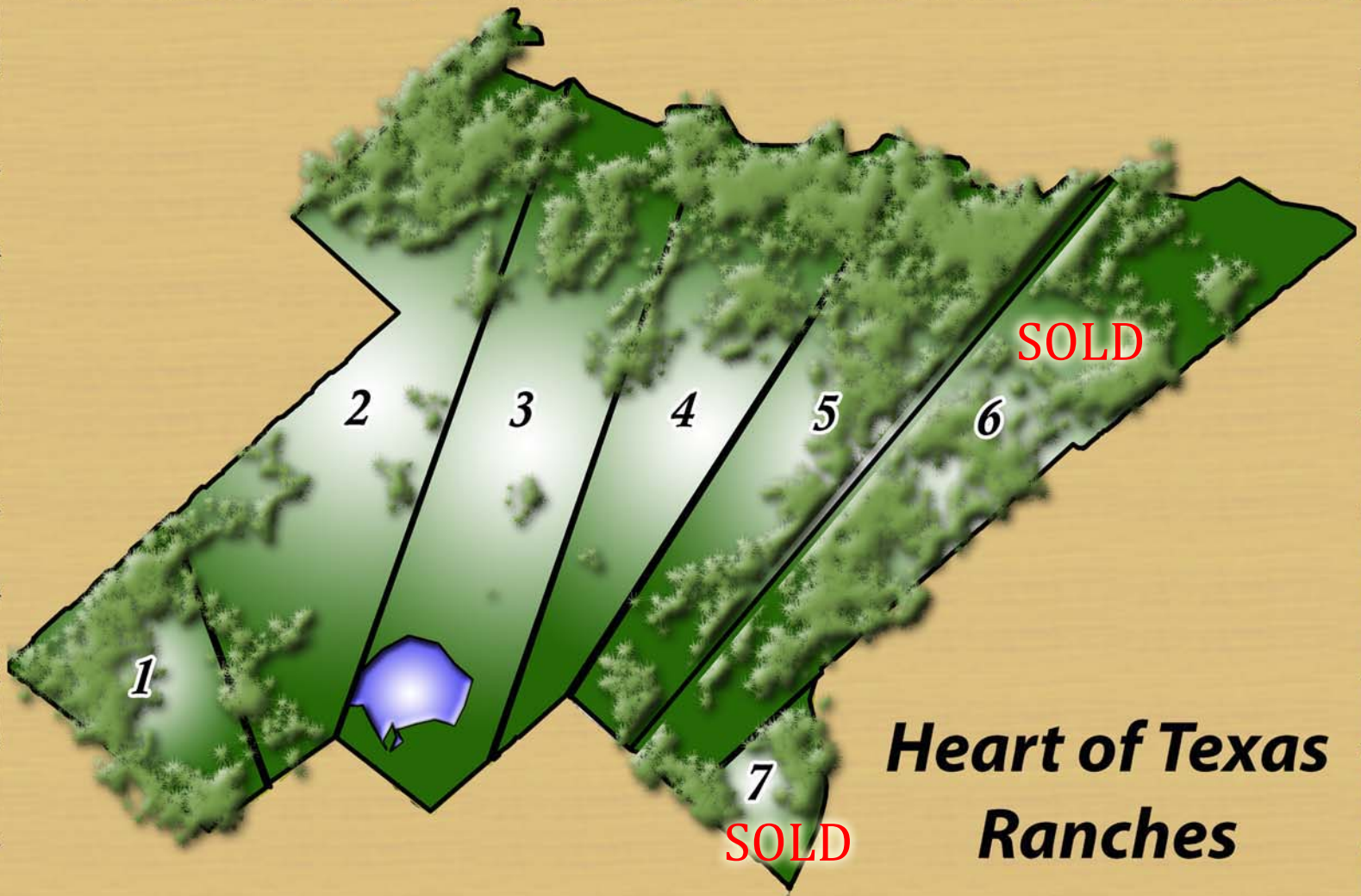
Contact Travis Bevers for Showing Information

(979)277-4920

www.BeversRealEstate.com



Contact Travis Bevers for Showing Information
(979)277-4920
www.BeversRealEstate.com



Tract 1 - 57 acres - \$499,500	\$ 387,600
Tract 2 - 172 acres - \$899,500	\$ 860,000
Tract 3 - 156 acres - \$999,500	\$ 780,000
Tract 4 - 118 acres - \$566,400	\$ 472,000
Tract 5 - 133 acres - \$640,000	\$ 529,200
Tract 6 - 154 acres - \$799,500	SOLD
Tract 7 - 21 Acres - \$249,500	SOLD

Contact Travis Bevers for Showing Information
(979)277-4920

www.BeversRealEstate.com



SOLD

+/- 630 AC

